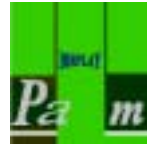


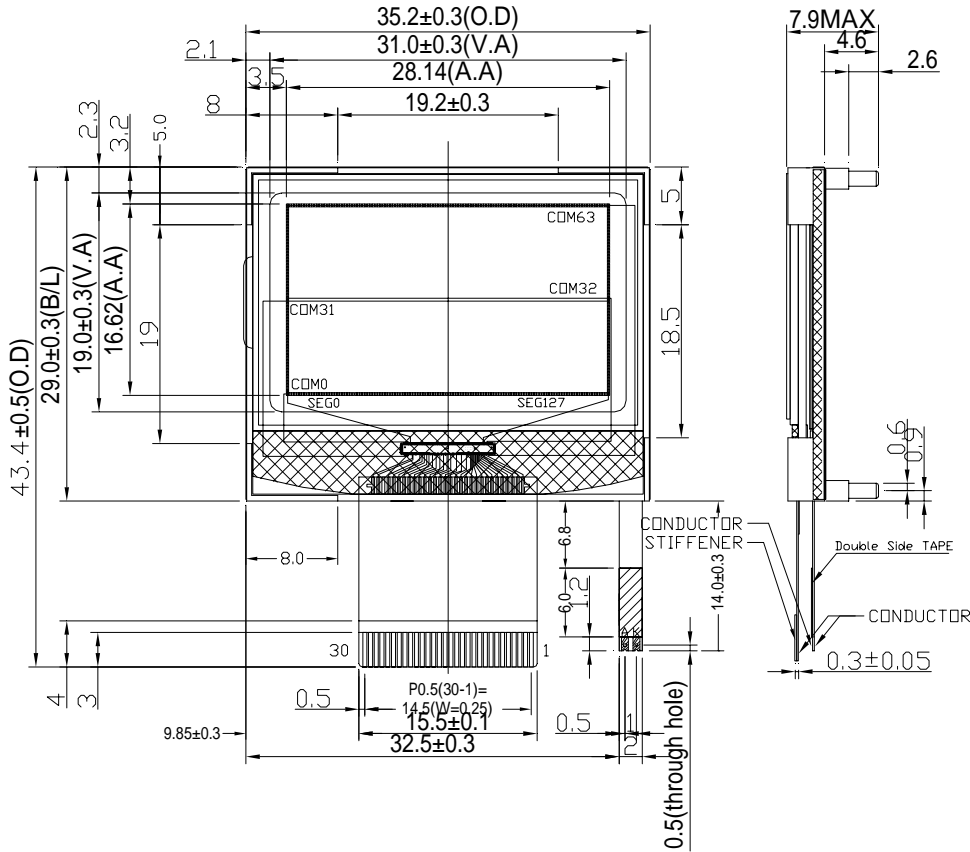
PHG1206M SERIES (128 * 64 DOTS)



龐誼科技股份有限公司

Palm Technology Co., Ltd.

EXTERNAL DIMENSION



NOTE:

- 1 DISPLAY TYPE: FSTN
- 2 POLARIZER MODE: TRANFLECTIVE/POSITIVE
- 3 VIEWING DIRECTION: 6:00
- 4 DRIVE METHOD: 1/65 DUTY, 1/9 BIAS
- 5 OPERATING VOLTAGE: V_{dd}=3.3V(V_{lcd}=8.3V), V_{led}=3.3V(I_{led}=40mA)

- 6 OPERATING TEMP: -20°C ~ +60°C
- 7 STORAGE TEMP: -30°C ~ +70°C
- 8 DRIVE IC: EM62100 (COG)
- 9 CONNECTOR: FPC
- 10 GENERAL TOLERANCE: ±0.2

PIN CONNECTIONS

PIN NO	1	2	3	4	5	6	7	8	9	10	11	12	13	14	15
SYMBOL	CS1B	RESB	RS	WRB	RDB	D0	D1	D2	D3	D4	D5	D6	D7	VDD	VSS
PIN NO	16	17	18	19	20	21	22	23	24	25	26	27	28	29	30
SYMBOL	VOU	C4+	C3+	C1-	C1+	C2+	C2-	V1	V2	V3	V4	V0	NC	M86	P/S