

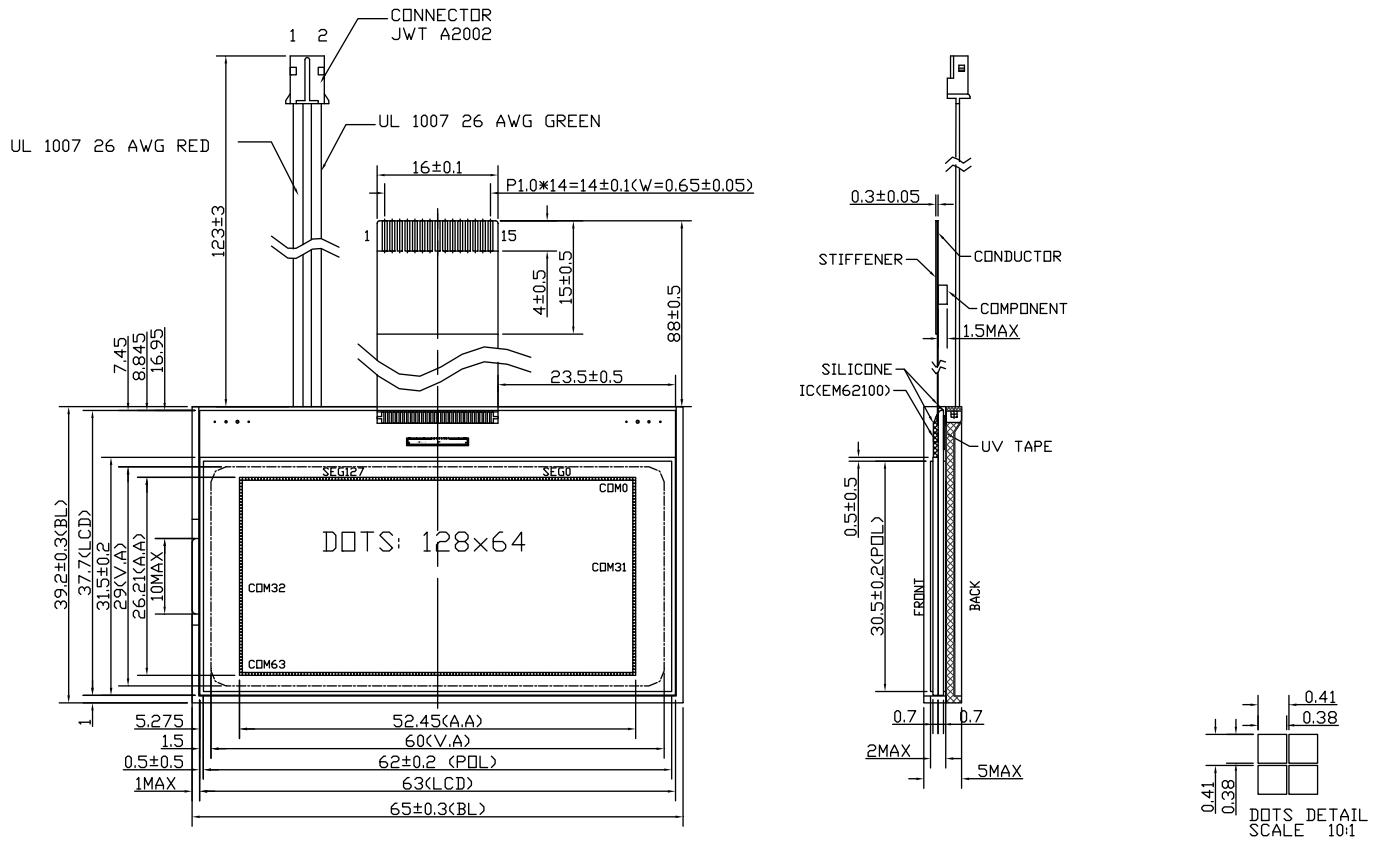
PHG1206G SERIES (128 * 64 DOTS)



龐誼科技股份有限公司

Palm Technology Co., Ltd.

EXTERNAL DIMENSION



NOTE:

- 1 DISPLAY TYPE: STN(Y/G)
- 2 POLARIZER MODE: TRANFLECTIVE/POSITIVE
- 3 VIEWING DIRECTION: 6:00
- 4 DRIVE METHOD: 1/64 DUTY, 1/9 BIAS
- 5 OPERATING VOLTAGE: 9.0V (VDD=2.8V~3.2V)

- 6 OPERATING TEMP: $-20^{\circ}\text{C} \sim +70^{\circ}\text{C}$
- 7 STORAGE TEMP: $-30^{\circ}\text{C} \sim +80^{\circ}\text{C}$
- 8 DRIVE IC: EM62100 (COG)
- 9 CONNECTOR: FPC
- 10 BACKLIGHT: LED(Y/G)
- 11 GENERAL TOLERANCE: ± 0.2

PIN CONNECTIONS

PIN NO	1	2	3	4	5	6~13	14	15
SYMBOL	/CS1	/RES	A0	/WR	/RD	DB0~DB7	GND	VDD