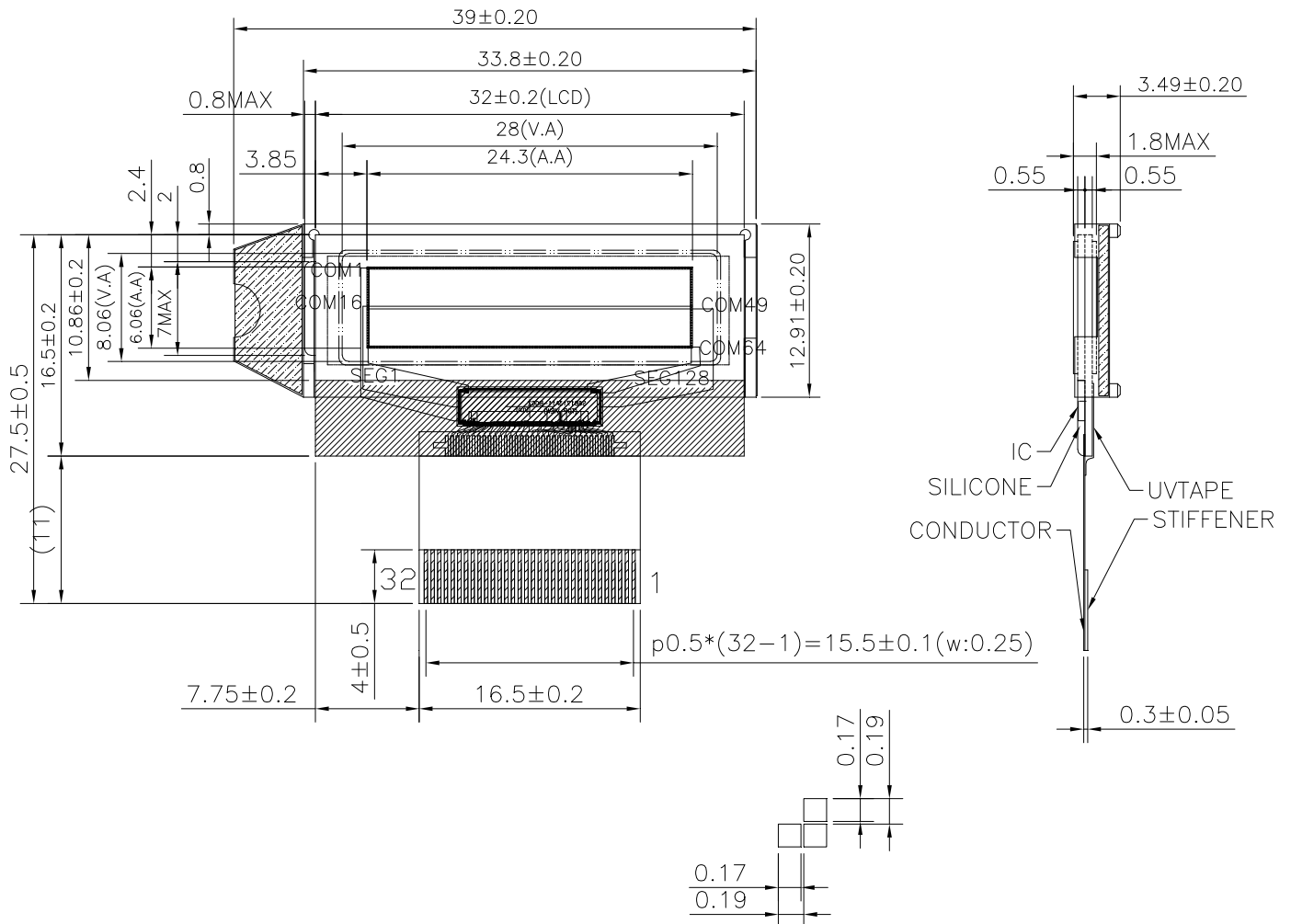


# PHG1203A SERIES (128 \* 32 DOTS)



龐誼科技股份有限公司  
Palm Technology Co., Ltd.

## EXTERNAL DIMENSION



NOTE:

- 1: DISPLAY TYPE: FSTN
- 2: POLARIZER MODE: TRANFLECTIVE/POSTITIVE
- 3: VIEWING DIRECTION: 6:00
- 4: DRIVE METHOD: 1/33 DUTY, 1/6 BIAS
- 5: OPERATING VOLTAGE: 7.0V

- 6: OPERATING TEMP:  $-20^{\circ}\text{C} - 70^{\circ}\text{C}$
- 7: STORAGE TEMP:  $-30^{\circ}\text{C} - 80^{\circ}\text{C}$
- 8: DRIVE IC: S6B1713A11-B0CZ
- 9: CONNECTOR: FPC

## PIN CONNECTIONS

|               |      |        |     |       |      |         |     |    |       |       |     |
|---------------|------|--------|-----|-------|------|---------|-----|----|-------|-------|-----|
| <i>PIN NO</i> | 1    | 2      | 3   | 4     | 5    | 6~13    |     | 14 | 15    | 16    | 17  |
| <i>SYMBOL</i> | CS1B | RESETB | RS  | RW/WR | E/RD | DB0~DB7 |     | MI | PS    | VSS   | VDD |
| <i>PIN NO</i> | 18   | 19     | 20  | 21    | 22   | 23      | 24  | 25 | 26~30 | 31    | 32  |
| <i>SYMBOL</i> | VOUT | C3+    | C3- | C1+   | C1-  | C2+     | C2- | VR | V0~V4 | INTRS | NC  |