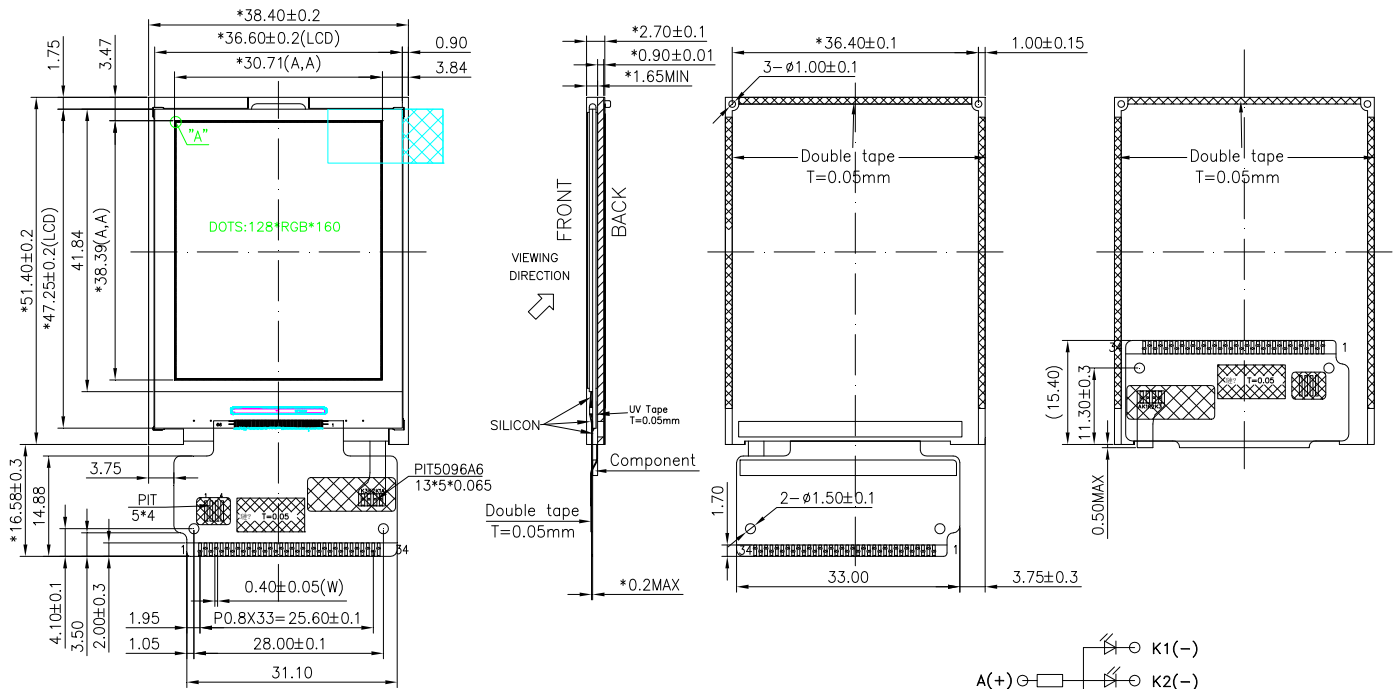
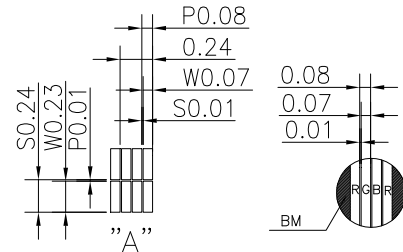
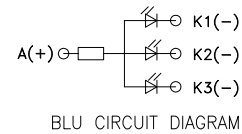


EXTERNAL DIMENSION



NOTES:

1. DISPLAY TYPE: 2" CSTN 65K COLOR
2. BACKLIGHT: 3-Chip WHITE LEDs parallel
3. FRONT POLARIZER: TRANSMISSIVE/NEGATIVE
4. REAR POLARIZER: TRANSMISSIVE/NEGATIVE
5. OPERATING TEMP: -20°C ~ 70°C
6. STORAGE TEMP: -30°C ~ 80°C
7. DRIVER IC: COG(IC: ST7669V)
8. UNMARKED TOLERANCES:±0.2



PIN CONNECTIONS

PIN NO	1	2	3	4	5	6	7~22	23	24	
SYMBOL	GND	VDD	/CS	RS	/WR	RD	D0~D15	/LCD_RESET	IOVCC	
PIN NO	25	26	27	28	29	30	31	32	33	34
SYMBOL	GND	LED3-	LED2-	LED1-	LED+	IM0	X-	X+	Y-	Y+