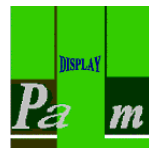
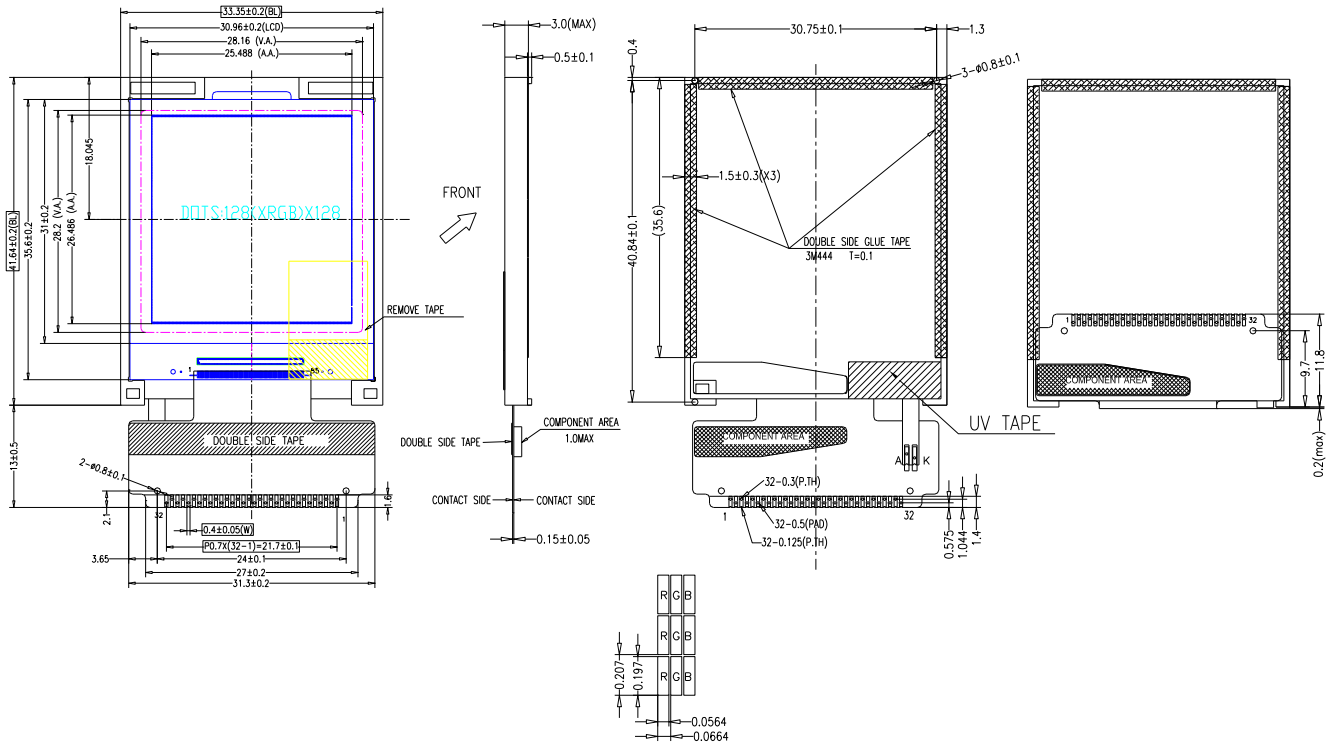


PZG15BW-SCLW (128 * RGB * 128 DOTS)



龐誼科技股份有限公司
Palm Technology Co., Ltd.

EXTERNAL DIMENSION



NOTES:

1. DISPLAY TYPE: CSTN (65K COLOR)
2. VIEWING DIRECTION: 6:00
3. POLARIZER MODE: TRANSMISSIVE/NEGATIVE
4. LCD CONTROLLER: ST7637
5. DRIVE METHOD: 1/128 DUTY 1/12 BIAS
6. VDD: 3.0V
7. OPERATING VOLTAGE: 14V
8. BACKLIGHT: 1CHIP-WHITE LED
9. OPERATING TEMP.: -20°C~70°C
10. STORAGE TEMP.: -30°C~80°C
11. UNMARKED TOLERANCE: ±0.3
12. MEANS IMPORTANT DIMENSION

PIN CONNECTIONS

<i>PIN NO</i>	1	2	3	4	5	6	7	8	9	10	11
<i>SYMBOL</i>	NC	LED+	LED-	GND	VDD	VDD	OTPD	OTPG	RESET	RS	WR
<i>PIN NO</i>	12	13	14	15	16	17	18	19	20	21	22
<i>SYMBOL</i>	RD	DB0	DB1	DB2	DB3	DB4	DB5	DB6	DB7	DB8	DB9
<i>PIN NO</i>	23	24	25	26	27	28	29	30	31	32	
<i>SYMBOL</i>	DB10	DB11	DB12	DB13	DB14	DB15	MPU	CS	GND	NC	