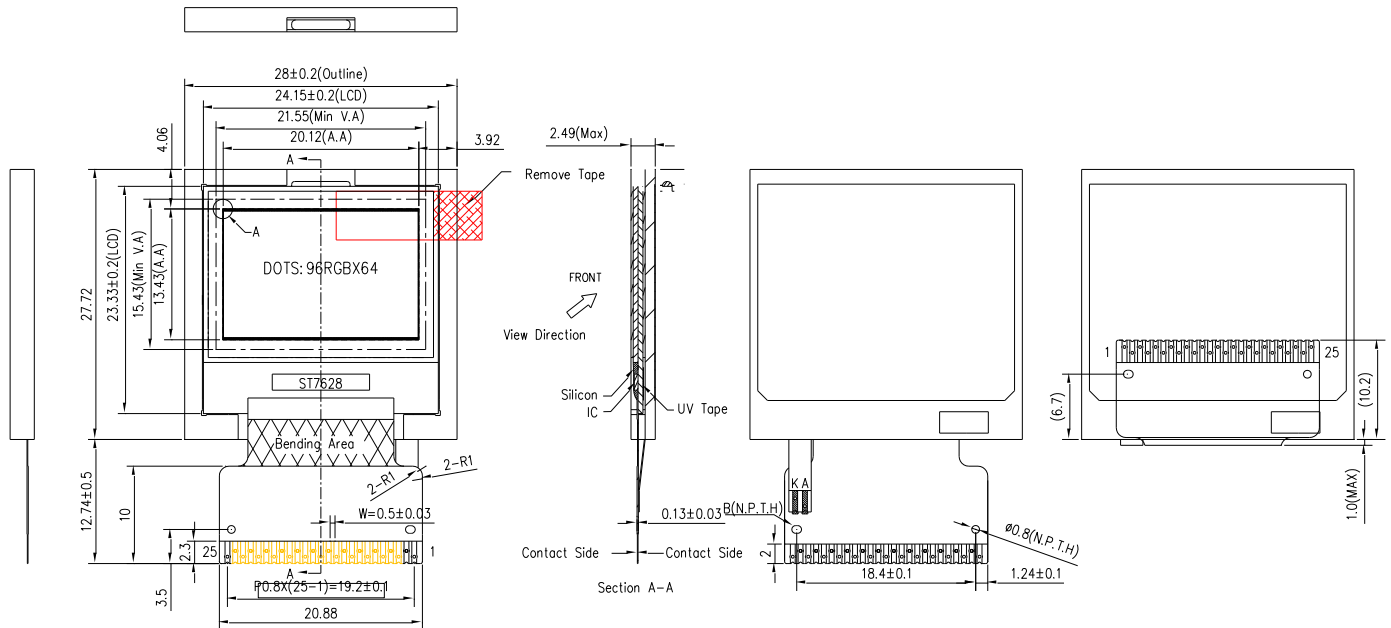


# PZG10BW-SCLW (96 \* RGB \* 64 DOTS)

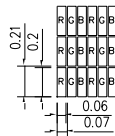


龐誼科技股份有限公司  
Palm Technology Co., Ltd.

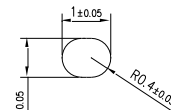
## EXTERNAL DIMENSION



- NOTES:
1. DISPLAY TYPE: CSTN
  2. VIEWING DIRECTION: 6:00
  3. POLARIZER MODE: TRANSMISSIVE/NEGATIVE
  4. DRIVE METHOD: 1/70 DUTY 1/9 BIAS
  5. VDDI=VDDA 2.8V  
VLCD 9.5V
  6. OPERATING TEMP: -20°C~+70°C
  7. STORAGE TEMP: -30°C~+80°C
  8. DRIVER: ST7628
  9. BACKLIGHT: LED(1 CHIP)
  10. UNMARKED TOLERANCES: ±0.3mm
  11. CONTROLLED DIMENSION:
  12. REQUIREMENTS ON ENVIRONMENTAL PROTECTION: ROHS



Detail A  
15/1



Detail B  
5/1

## PIN CONNECTIONS

<i>PIN NO</i>	1	2	3	4	5	6	7	8	9	10
<i>SYMBOL</i>	LED_K	LED_A	A0	RW_WR	D0	D1	D2	D3	D4	D5
<i>PIN NO</i>	11	12	13	14	15	16	17	18	19	20
<i>SYMBOL</i>	D6	D7	E_RD	RST	IF1	IF2	IF3	/CS	VDD1	VSS
<i>PIN NO</i>	21	22	23	24	25					
<i>SYMBOL</i>	VM	VDDA	VLCD	XVOOUT	VGOUT					